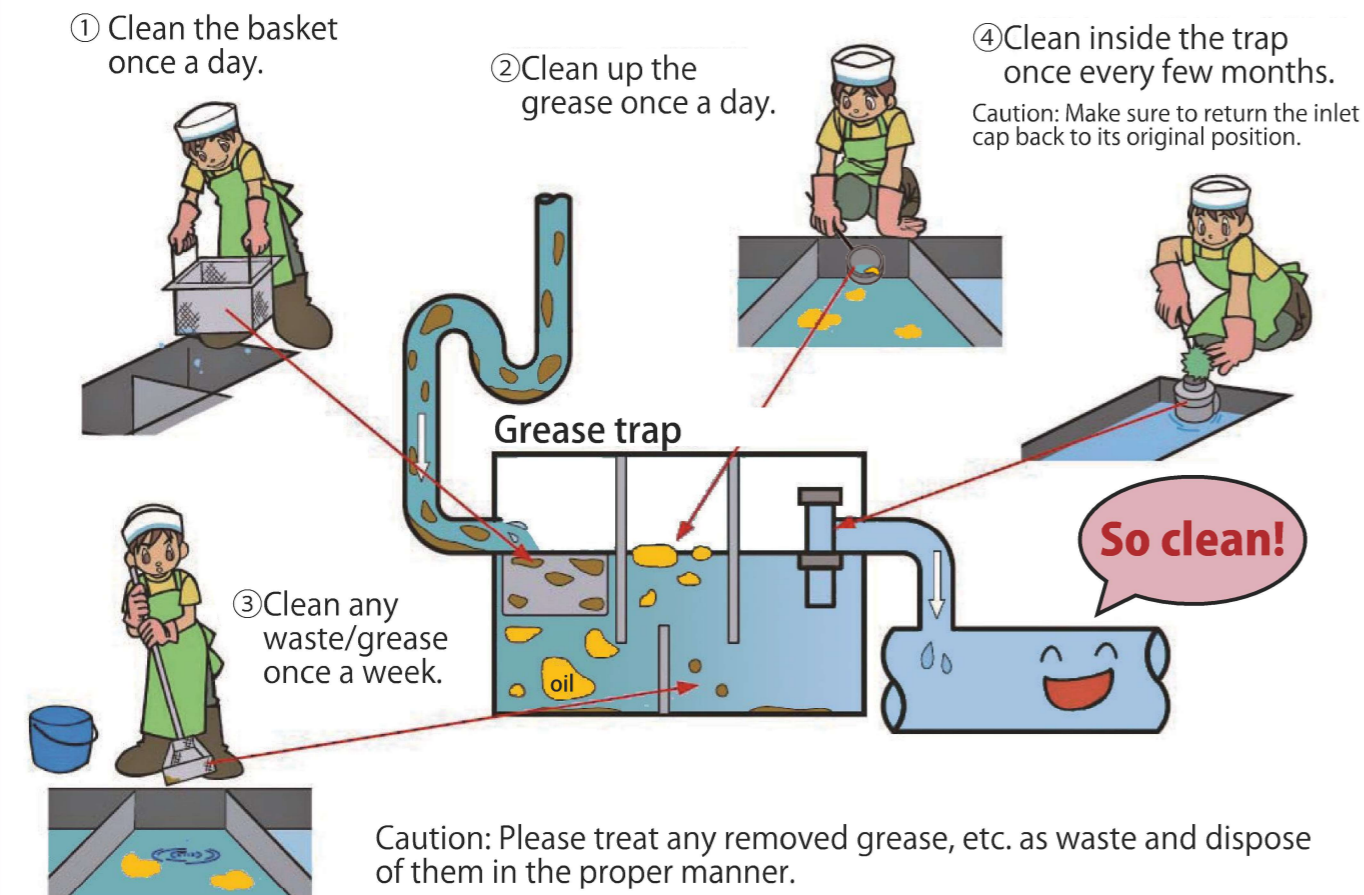


Clean it regularly!

A lack of cleaning may cause bad odors or encourage proliferation of pests like cockroaches.

Clean grease traps daily

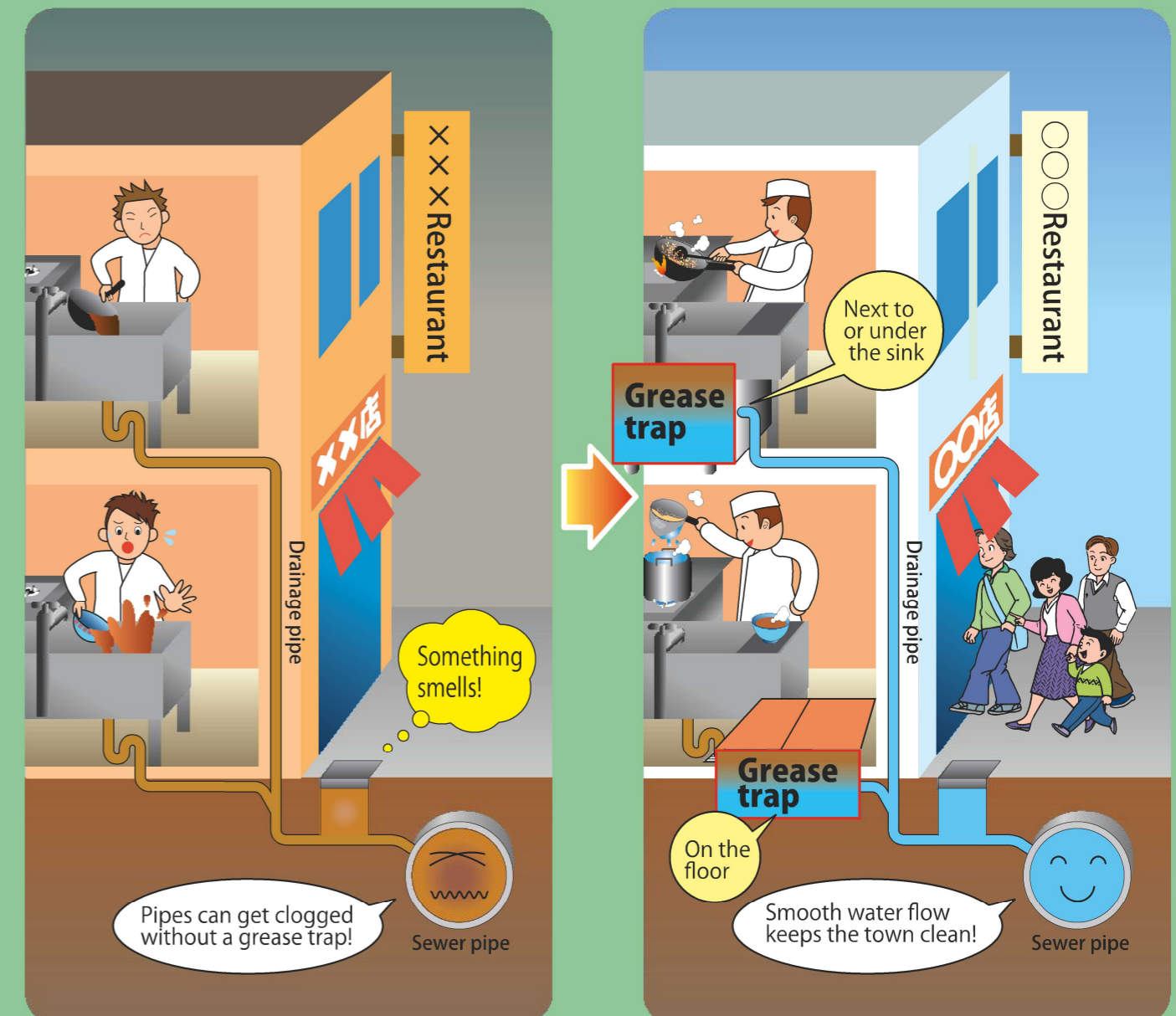


● Contact information

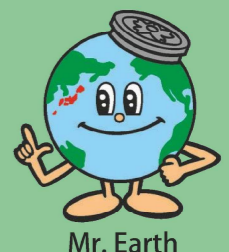
Chiyoda, Chuo, Minato (Daiba not included), and Shibuya Cities	Chubu Sewerage Office Customer Service Section, Drain System Otemachi 2-6-3, Chiyoda City TEL: 3270-8322	Shinjuku, Nakano, and Suginami Cities	Seibu 1st Sewerage Office Customer Service Section, Drain System Arai 3-37-4, Nakano City TEL: 5343-6207
Bunkyo, Taito, Toshima, and Arakawa Cities	Hokubu Sewerage Office Customer Service Section, Drain System Kuramae 2-1-8, Taito City TEL: 5820-4347	Kita, Itabashi, and Nerima Cities	Seibu 2nd Sewerage Office Customer Service Section, Drain System Ukima 4-27-1, Kita City TEL: 3969-2327
Minato (Daiba only), Sumida, Koto, Shinagawa (Higashi-Yashio only), and Ota (Reiwajima only) Cities	Tobu 1st Sewerage Office Customer Service Section, Drain System Toyo 7-1-14, Koto City TEL: 3645-9647	Shinagawa (Higashi-Yashio not included), Meguro, Ota (Reiwajima not included), and Setagaya Cities	Nanbu Sewerage Office Customer Service Section, Drain System Yukigayaotsukamachi 13-26, Ota City TEL: 5734-5044
Adachi, Katsushika, and Edogawa Cities	Tobu 2nd Sewerage Office Customer Service Section, Drain System Kosuge 1-2-1, Katsushika City TEL: 5680-1354		

To restaurant owners, Installing a grease trap is mandatory!

* Article 3-2 of the Tokyo Metropolitan Sewerage Ordinance Enforcement Regulations
* Provisions related to the Building Standards Act (Public notice of the Ministry of Construction No. 1597 of 1975)



- Grease traps can be installed during business hours
 - Grease traps can be installed even if the store for your restaurant is rented
- Many types of grease traps are available.



If you don't install a grease trap,

❌ Drainage pipes can get clogged!



<Indoor drainage pipes clogged with grease>
Grease coming from restaurants and households solidifies inside drainage pipes and sticks to the inner surface. The pipes will clog if left this way.



<Wastewater overflowing onto the sidewalk>
Clogged drainage pipes may cause wastewater to overflow and may even overflow inside buildings. It's extremely unsanitary and smells awful.

❌ It could pollute our rivers and oceans!

Grease that did not solidify in drainage pipes will eventually solidify in sewer pipes. When wastewater is swept away by heavy rain, it can become an "oil ball" flowing out of rainwater outfalls and polluting rivers and oceans.



Oil ball

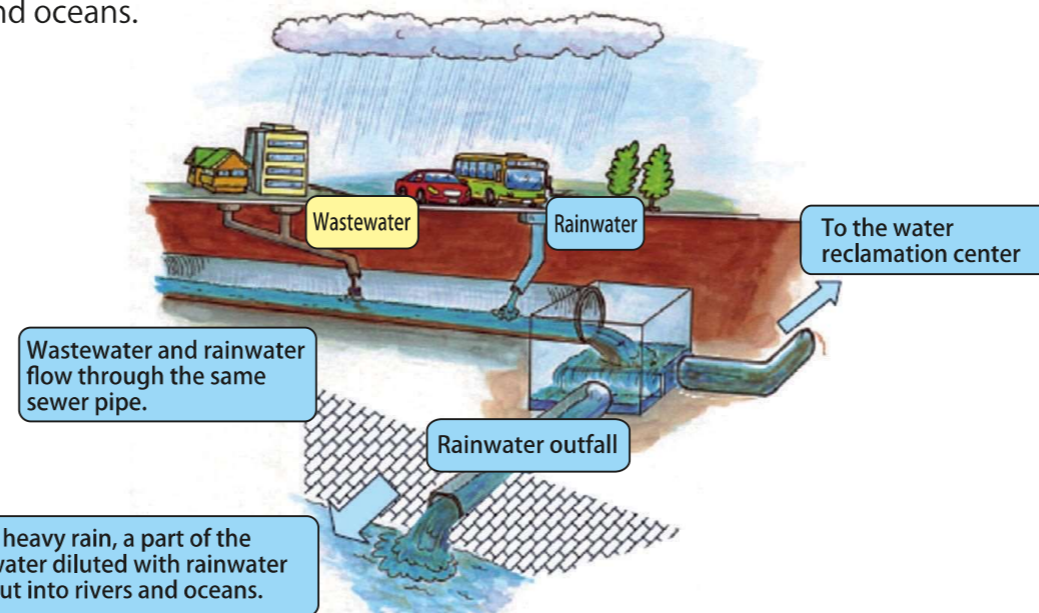


Rainwater outfall during clear weather



Rainwater outfall during heavy rain

.....
Approximately 80% of all areas of Tokyo's 23 cities use a combined sewage system where water drained from restaurants, households, and rainwater are all drained together. In the event of heavy rain, rainwater mixed with wastewater can flow into rivers and oceans.



Structure of the combined sewerage system (during heavy rain)

DO NOT dispose wastewater from restaurants and households into street inlets.

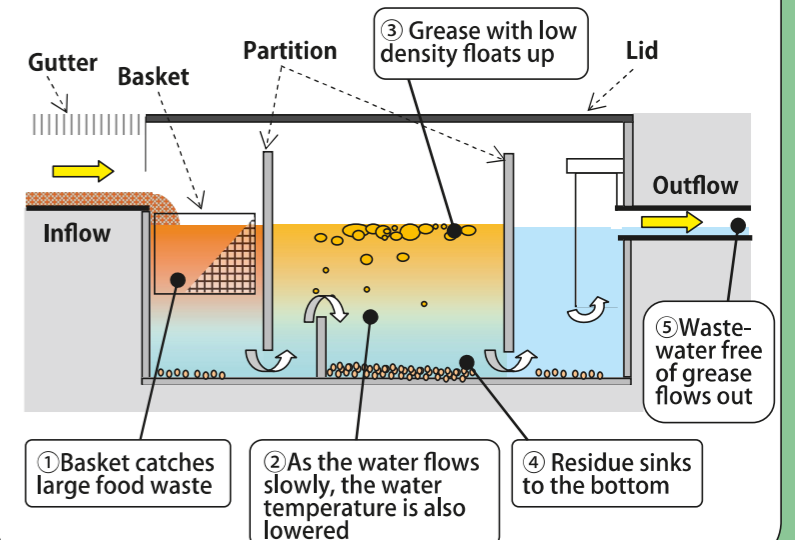
Discarding water (wastewater) from restaurants and households into street inlets meant for rainwater may cause decay, bad smells, and attract pests, etc. In addition, in the case of a separate sewage system where wastewater and rainwater are drained into separate sewer pipes, grease, etc. contained in discharged water is drained directly into rivers and oceans. *Such acts may be subject to legal punishment.



Street inlets

What is a grease trap?

A device that separates and collects grease contained in discharged water and prevents it from draining into drainage and sewer pipes. The grease in the discharged water that drained into the trap floats up due to its lower density, and only discharged water with a lesser amount of grease flows into the drainage pipe.



Points of caution when installing a grease trap

- Select a product certified by the "Nihon Soshuki Kogyokai (Japan Interceptor Industry Association)."



Sample of a certificate card

A list of certified products can be found on the "Nihon Soshuki Kogyokai (Japan Interceptor Industry Association)" website.

Nihon Soshuki Kogyokai

Contact: Email - info@nihon-soshuki.jp

- Grease traps should only be installed by a drain system construction company designated by the Tokyo Metropolitan Government.

Find your nearest Tokyo Metropolitan Government designated drain system construction company using the contact information on the next page or through the Tokyo Bureau of Sewage website.

- To maximize grease trap performance

- ⇒ Select a grease trap with the proper capacity and install it somewhere it can easily be cleaned.
*Such acts may be subject to legal punishment. Calculated with the restaurant's entire area and the number of people using it.
- ⇒ DO NOT leave it with the partition removed.
- ⇒ DO NOT install any additional aeration devices.
- ⇒ DO NOT use grease treatment agents that break down grease as it will drain with discharged water.