

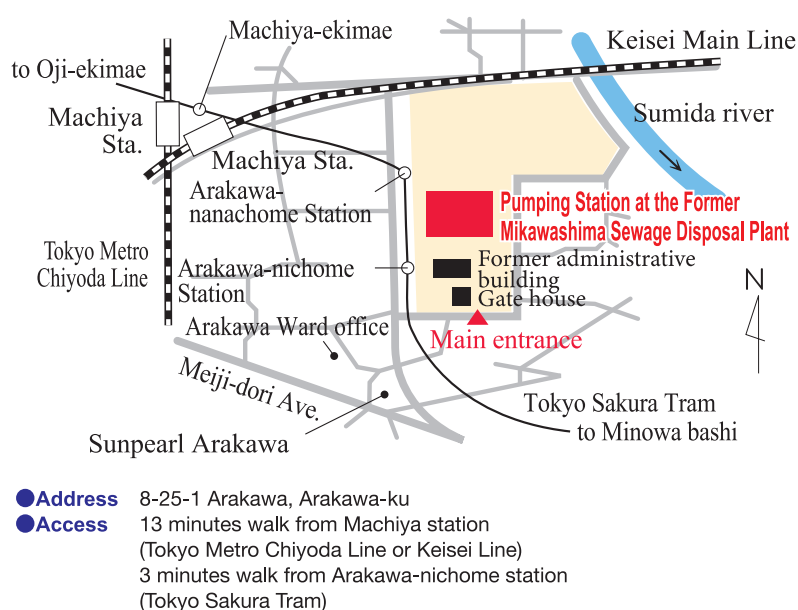


National Important Cultural Property Pumping Station at the Former Mikawashima Sewage Disposal Plant



Earth-kun, the mascot of
Bureau of Sewerage

Guide map



Reservations are necessary for the facility tour.

Please contact Mikawashima Important
Cultural Property Tour Desk.

Phone: 03(6458)3940

Opening hours: 9:00-17:00 (weekdays)

Closed day: Tuesdays, Fridays,
and the year-end
and New Year holidays

Internet Reservation Service

URL: <https://www.tgs-mikawashimayoyaku.jp>



Pumping Station at the Former Mikawashima Sewage Disposal Plant is the old wastewater treatment facility located in the midstream of Sumida River. As part of the Tokyo Town Planning Project, they were constructed under the leadership of Shinichi Yonemoto, architectural engineer of Tokyo City, and their operation started in March 1922.

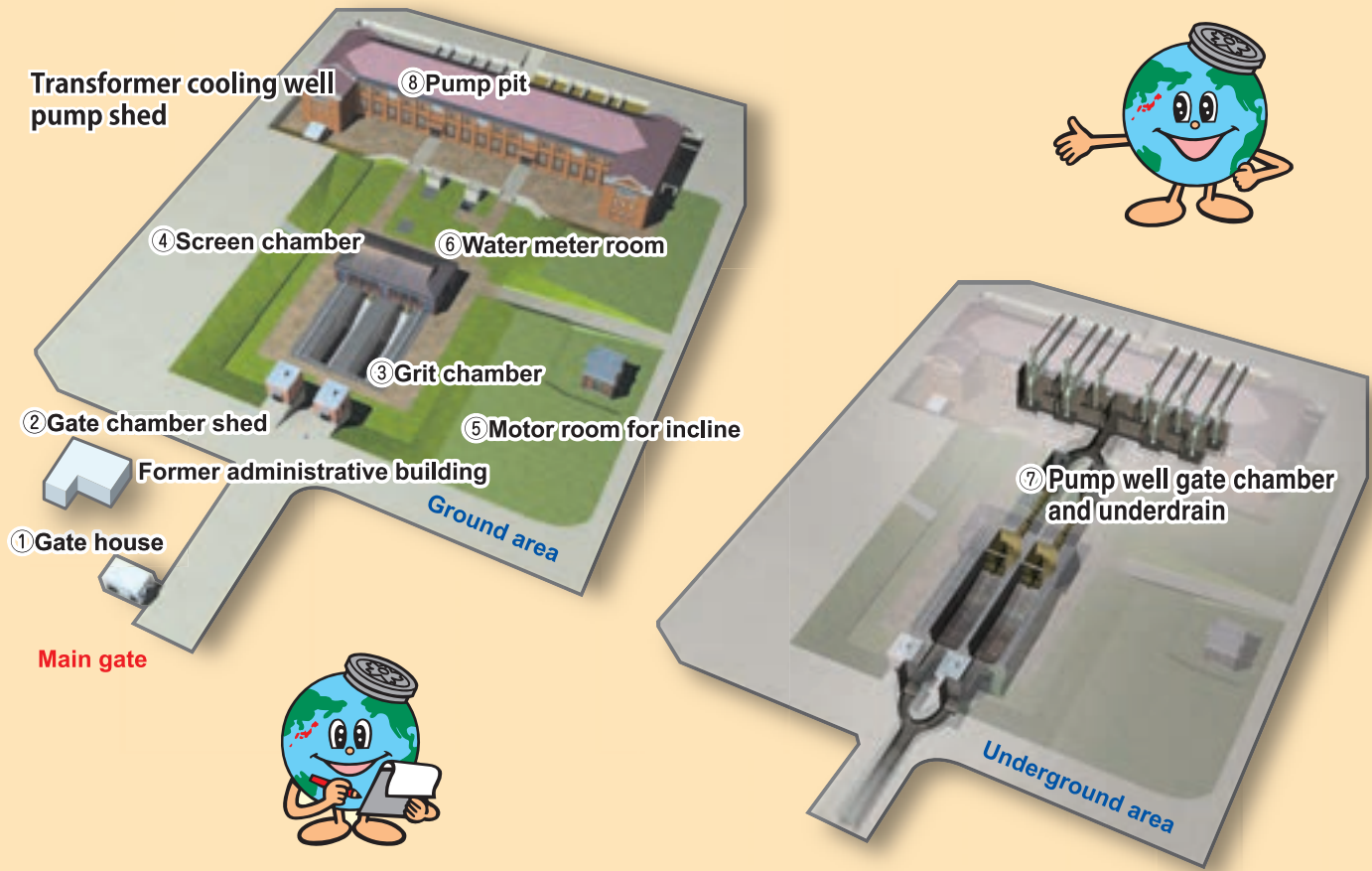
Since the facility has high historical value as the representative remnant of the former Mikawashima Sewage Disposal Plant, it was designated as a National Important Cultural Property (building) on December 4, 2007, the first in the field of sewerage system.

A series of well-preserved structure such as gate chambers and grit chambers still remain in the facility, which makes them important cultural properties in understanding the construction of a pumping station at a modern wastewater treatment plant.



▲ Notice of Important Cultural Property Designation

Pumping Station at the Former Mikawashima Sewage Disposal Plant



① **Gate house**
Constructed as a front entrance in 1925.



Gate house (1962)



② **Gate chamber shed**
There is one gate chamber each on the east side and the west side. It has a gate in the basement which temporarily stops the flow of sewage for maintenance and other purposes.



③ **Grit chamber**
There are two ponds, east one and west one. As sewage flows slowly through a pond, sand and grit are settled out.



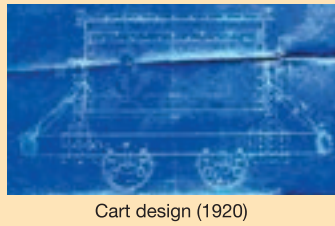
Original grit chamber



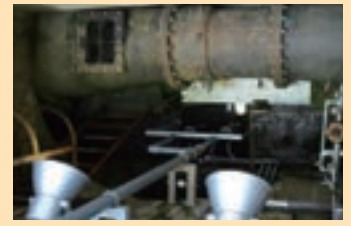
④ **Screen chamber**
A screen is installed to remove debris from sewage.



⑤ **Motor room for incline**
There was a machine installed to lift minecarts loaded with soil and sand that had been removed from sewage, up to the top of the hill.



Cart design (1920)



⑥ **Water meter room**
In the basement, equipment called Venturi Meter is installed to measure the amount of sewage.

Why do you measure the water amount?
It's because we need to change the number of pumps and water sprinklers, a post-water treatment facility, according to the sewage flow.



⑦ **Pump well gate chamber and underdrain**
Sewage that flows into the dual systems merges here, then flows into each of the pumping wells.



⑧ **Pump pit**
Ten pumps are installed which draw sewage from underground pump wells.



The pumping station is a facility to pump up sewage flowing deep in the underground and send it to the wastewater treatment facility on the ground.

The wastewater treatment facility in the former Mikawashima Sewage Disposal Plant went through replacement with the ones using the latest technology as time passed.

The pumping station, however, remained as it had been until it stopped operation in 1999.

